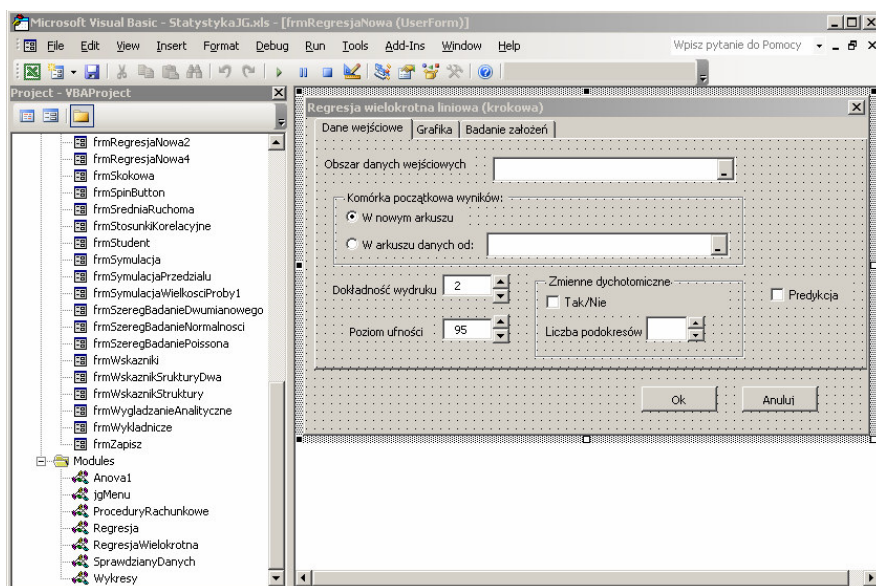
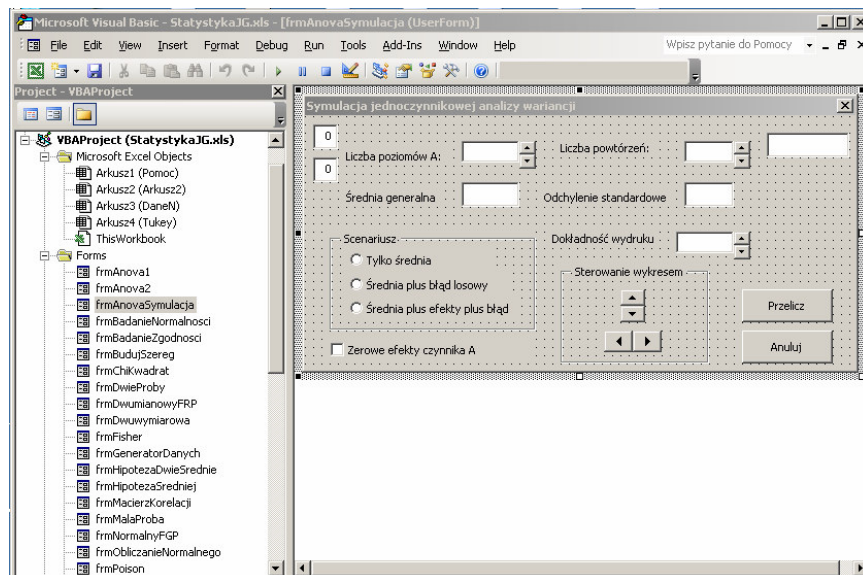


Przykładowe zrzuty ekranowe procedur VBA utworzonych w pliku StatystykaJG.xls



Microsoft Visual Basic - StatystykaJG.xls - [ProceduryRachunkowe (Code)]

File Edit View Insert Format Debug Run Tools Add-Ins Window Help Wpisz pytanie do Pomocy

Ln 1, Col 1

Project - VBAProject

```

Public Type jg_Warians
    ile As Integer
    suma As Double
    Srednia As Double
    warians As Double
    srednikwadrat As Double
    blad sredniej As Double
End Type

Public Function ObliczWarians(myG As Range) As jg_Warians
    Dim x1 As Double, x2 As Double
    ObliczWarians.ile = myG.Rows.Count
    x1 = Application.WorksheetFunction.Sum(myG)
    x2 = Application.WorksheetFunction.SumSq(myG)
    ObliczWarians.suma = x1
    ObliczWarians.Srednia = x1 / ObliczWarians.ile
    ObliczWarians.warians = x2 - x1 * ObliczWarians.Srednia
    ObliczWarians.srednikwadrat = ObliczWarians.warians / (ObliczWarians.ile - 1)
    ObliczWarians.blad sredniej = Sqr(ObliczWarians.srednikwadrat)
End Function

Public Sub WypiszDwieProby(myD As Range, p1 As jg_Warians, p2 As jg_Warians, flags As Boolean)
    Dim Sr As Double, Se As Double, ts As Double, xr As Double
    WypiszWiersz myD.Offset(0, 1), "I próba", "II próba"
    WypiszWiersz myD.Offset(1, 0), "Liczebność", p1.ile, p2.ile

```

Microsoft Visual Basic - StatystykaJG.xls - [Wykresy (Code)]

File Edit View Insert Format Debug Run Tools Add-Ins Window Help Wpisz pytanie do Pomocy

Ln 1, Col 1

Project - VBAProject

```

Public Sub WykresFRP(myG As Range, myX As Range, t_tyt As String)
    Dim t As String, tw As String

    t = ActiveSheet.Name
    tw = "=" & t & "! " & myX.Address(, , xlR1C1)
    Charts.Add
    ActiveChart.ChartType = xlColumnClustered
    If t_tyt Then
        ActiveChart.SetSourceData Source:=Sheets(t).Range(myG.Address(, , xlR1C1)), PlotBy:=xlRows
    Else
        ActiveChart.SetSourceData Source:=Sheets(t).Range(myG.Address(, , xlR1C1)), PlotBy:=xlColumns
    End If
    ActiveChart.SeriesCollection(1).Delete
    ActiveChart.SeriesCollection(1).XValues = tw
    ActiveChart.Location Where:=xlLocationAsObject, Name:=t
    With ActiveChart
        .HasTitle = True
        .ChartTitle.Characters.Text = t_tyt
        .Axes(xlCategory, xlPrimary).HasTitle = False
        .Axes(xlValue, xlPrimary).HasTitle = False
    End With
    ActiveChart.Legend.Select
    Selection.Delete

```

Microsoft Visual Basic - StatystykaJG.xls - [SprawdzianyDanych (Code)]

File Edit View Insert Format Debug Run Tools Add-Ins Window Help Wpisz pytanie do Pomocy

Ln 4, Col 1

Project - VBAProject

```

Public Function CzyDobryObszar(myG As Range, t_msg As String, t_kontrola As String) As Boolean
    Optional macierz As Boolean = False
    If macierz Then
        If myG.Cells(1, 1) = t_kontrola Then
            CzyDobryObszar = True
        Else
            MsgBox t_msg, vbCritical, "StatystykaJG"
            CzyDobryObszar = False
        End If
    Else
        If myG.Cells(1) = t_kontrola Then
            CzyDobryObszar = True
        Else
            MsgBox t_msg, vbCritical, "StatystykaJG"
            CzyDobryObszar = False
        End If
    End If
End Function

Public Function CzyNumeryczne(myJ As Range) As Boolean
    ' sprawdza, czy w obszarze myJ są dane numeryczne
    Dim i As Integer, j As Integer

    For i = 1 To myJ.Rows.Count
        For j = 1 To myJ.Columns.Count
            If Not IsNumeric(myJ.Cells(i, j)) Or IsEmpty(myJ.Cells(i, j)) Then
                CzyNumeryczne = False
            End If
        Next j
    Next i
End Function

```

Microsoft Visual Basic - StatystykaJG.xls - [jgMenu (Code)]

File Edit View Insert Format Debug Run Tools Add-Ins Window Help Wpisz pytanie do Pomocy

Ln 26, Col 8

Project - VBAProject

```

Public AppPath As String
Sub Auto_open()
    Dim myMenuBar As Variant, NewMenu As Variant
    Dim mnuB As Variant, mnuPop As Variant
    Set myMenuBar = CommandBars.ActiveMenuBar
    Set NewMenu = _
        myMenuBar.Controls.Add(Type:=msoControlPopup, Temporary:=True)
    With NewMenu
        .Caption = "Rozkłady"
        .BeginGroup = True
    End With
    Set mnuPop = NewMenu.Controls.Add(Type:=msoControlPopup, Temporary:=True)
    mnuPop.Caption = "Zmienna losowa skokowa"
    Set mnuB = mnuPop.Controls.Add(Type:=msoControlButton)
    With mnuB
        .Style = msoButtonCaption
        .Caption = "Jednowymiarowa"
        .OnAction = "rSkokowa"
    End With
    Set mnuB = Nothing
    Set mnuB = mnuPop.Controls.Add(Type:=msoControlButton)
    With mnuB
        .Style = msoButtonCaption
        .Caption = "Dwuwymiarowa"
    End With
End Sub

```